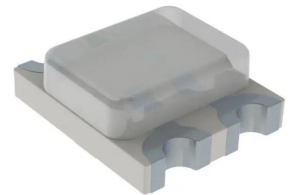
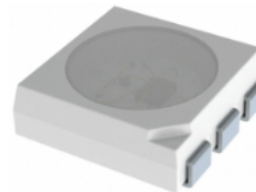
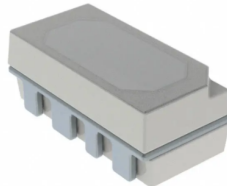
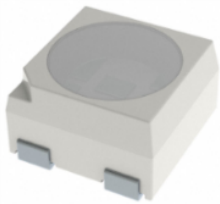


# INOLUX CORPORATION

## RGB(W)LEDs



Comprehensive package selection, custom binning, and unmatched support



### PRODUCT OPTIONS

- Package dimensions from
- 1.0 x 1.0 (mm) to 5.5 x 5.0 (mm), provide a multitude of high density design options.
- Range of luminous intensity and luminous flux to optimize performance while achieving high economic goals
- Customized binning to meet your project needs.

### TARGET APPLICATIONS

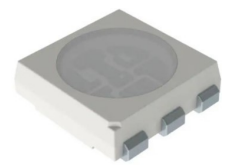
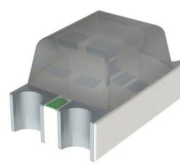
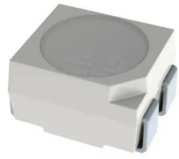
- IoT / Smart Devices
- Ambient Color Effects
- Decorative Lighting
- Signage
- Keyboard and Display Backlighting
- Wearable technology
- Aftermarket Automotive Lighting
- Network, Communication, and Server Equipment

Interested in learning more? Contact our sales team.

[SALES@INOLUX-CORP.COM](mailto:SALES@INOLUX-CORP.COM)

Copyright © 2021 Inolux Corporation. All rights reserved.





## Addressable RGB(W)

Product Name	Package Description	Dimensions (mm)	Iv (mcd) R/G/B (Typ.)
IN-PI55TAT	5050 RGB IC 4 pins *	5.0 x 5.0 x 1.6	600/1250/300 @12mA
IN-PC55TBT	5050 RGB Clock IC	5.0 x 5.0 x 1.6	600/1250/400 @20mA
IN-PI55QAT	5050 <b>RGBW</b> IC 4 pins	5.0 x 5.0 x 1.6	300/850/150 @12mA
IN-PI42TAS	4020 RGB IC - 4 pins <b>(Side View)</b>	4.0 x 2.0 x 1.5	400/1250/250 @12mA
IN-PI33QBT	3537 <b>RGBW</b> - 6 pins	3.5 x 3.7 x 1.9	500/1500/400 @12mA
IN-PI33TCT	3537 Thin RGB IC - 6 pins	3.5 x 3.7 x 1.1	700/1500/400 @12mA
IN-PI33TBT	3.5 x 3.5 x 1.95 RGB IC - 4 pins	3.5 x 3.5 x 1.95	400/1250/300 @12mA
IN-PI22TAT	2427 RGB IC 4 pins	2.4 x 2.7 x 1.1	150/600/75 @5mA
IN-PI20TBT	2020 RGB IC 4 pins *	2.0 x 2.0 x .065	500/700/300 @12mA
IN-PC20TBT	2020 RGB Clock IC 6 pins	2.0 x 2.0 x 0.65	200/500/100 @5mA
IN-PI15TAT	1515 RGB IC 4 pins	1.5x 1.5x 0.65	350/700/200 @5mA

## RGB Side View

Product Name	Package Description	Dimensions (mm)	Iv (mcd) R/G/B (Typ.)
IN-S126TASRGB	1.0T 1206 Single Lens	3.2 x 1.5 x 1.0	250/1100/200 @20mA
IN-S126TBSRGB	1.0T 1206 Triple Lens	3.2 x 1.5 x 1.0	950/1500/330 @20mA
IN-S63TBS5R5G5B	0.5T 0603 4 pins	1.6 x 0.8 x 0.5	30/230/45 @5mA

\*6-pin version for extra power input

## RGB Top View

Product Name	Package Description	Dimensions (mm)	Iv (mcd) R/G/B (Typ.)
IN-P55TATRGB	5050 PLCC6	5.5 x 5.0 x 1.5	900/1800/600 @20mA
IN-P32TATRGB	3528 PLCC4 **	3.5 x 2.8 x 1.9	280/900/300
IN-S128TATRGB	1210 4 pins **	3.2 x 2.7 x 1.1	170/450/160 @20mA
IN-S85TATRGB	0805 4 pins	2.0 x 1.25 x 1.1	200/520/140 @20mA
IN-S66TATRGB	0606 4 pins **	1.6 x 1.5 x 0.55	180/450/115 @20mA
IN-S66TCTRGBE	0606 4 pins	1.6 x 1.5 x 0.55	450/1150/230 @20mA
IN-S66TFT5R5G5B	0606 6 pins	1.6 x 1.6 x 0.4	45/285/56 @5mA
IN-B101FCH	1010 4 pins	1.0 x 1.0 x 0.65	58/85/17 @10mA

## RGBW Top View

Product Name	Package Description	Dimensions (mm)	Iv (mcd) R/G/B/W (Typ.)	Iv (lm) R/G/B/W (Typ.)
IN-S05FCHWV	5050 8 pins	5.0 x 5.0 x 2.75	-	45/100/18/100 @350mA
IN-P55QDTRGBW	5050 PLCC8	5.0 x 5.0 x 1.65	500/220/450/- @20mA	-/-/-/10 @30mA
IN-P55QSTGRGBW	5050 PLCC8	5.0 x 5.0 x 1.10	-	11/25/5/40 @100mA

## RGB Reverse Mount

Product Name	Package Description	Dimensions (mm)	Iv (mcd) R/G/B (Typ.)
IN-S124TCRRGB	3528	3.5 x 2.8 x 1.85	71.5/285/71.5 @20mA
IN-P32TRRRGB	1204	3.2 x 1.2 x 0.6	600/2000/450 @20mA

\*\* Also available in pinout B

Interested in learning more? Contact our sales team.

[SALES@INOLUX-CORP.COM](mailto:SALES@INOLUX-CORP.COM)

Copyright © 2021 Inolux Corporation. All rights reserved.

